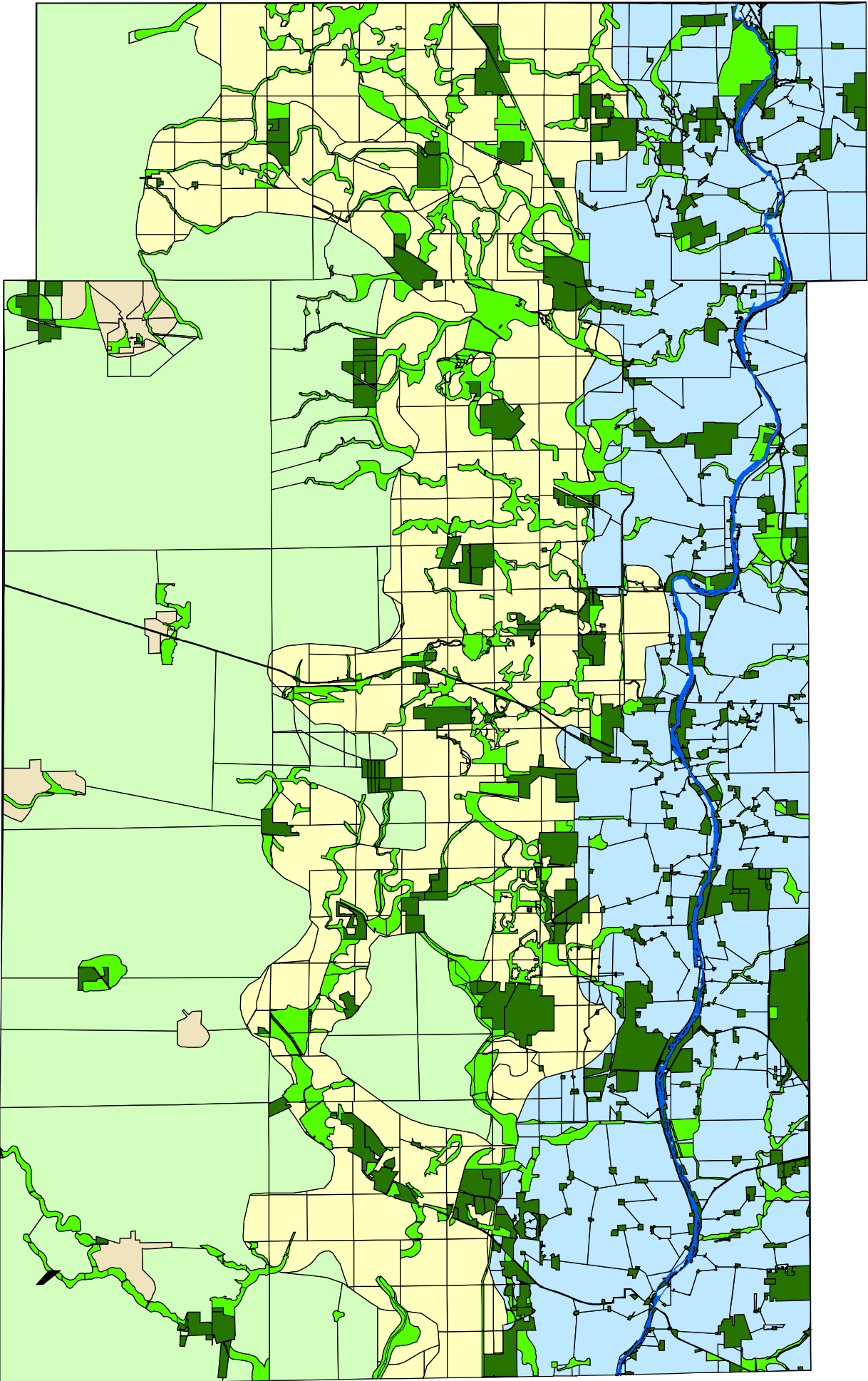

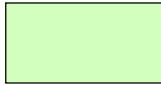


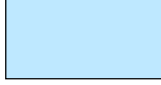


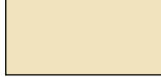


Kane County 2030 Conceptual Land Use Strategy

Prepared by: Adam Skibbe
Date: 12 January 2005



Legend

-  Fox River
-  Agriculture
-  Kane County
-  Critical Growth
-  Urban Corridor
-  Proposed Open Space
-  Existing Open Space
-  Agricultural Village

Data Sources:
Kane County Forest Preserve Land: Kane County FPD, February 2004
Other: Illinois DNR, Fox River Watershed CD