

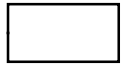


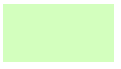





Kane County Land Cover Map

Prepared by: Adam Skibbe
Date: 9 November 2004

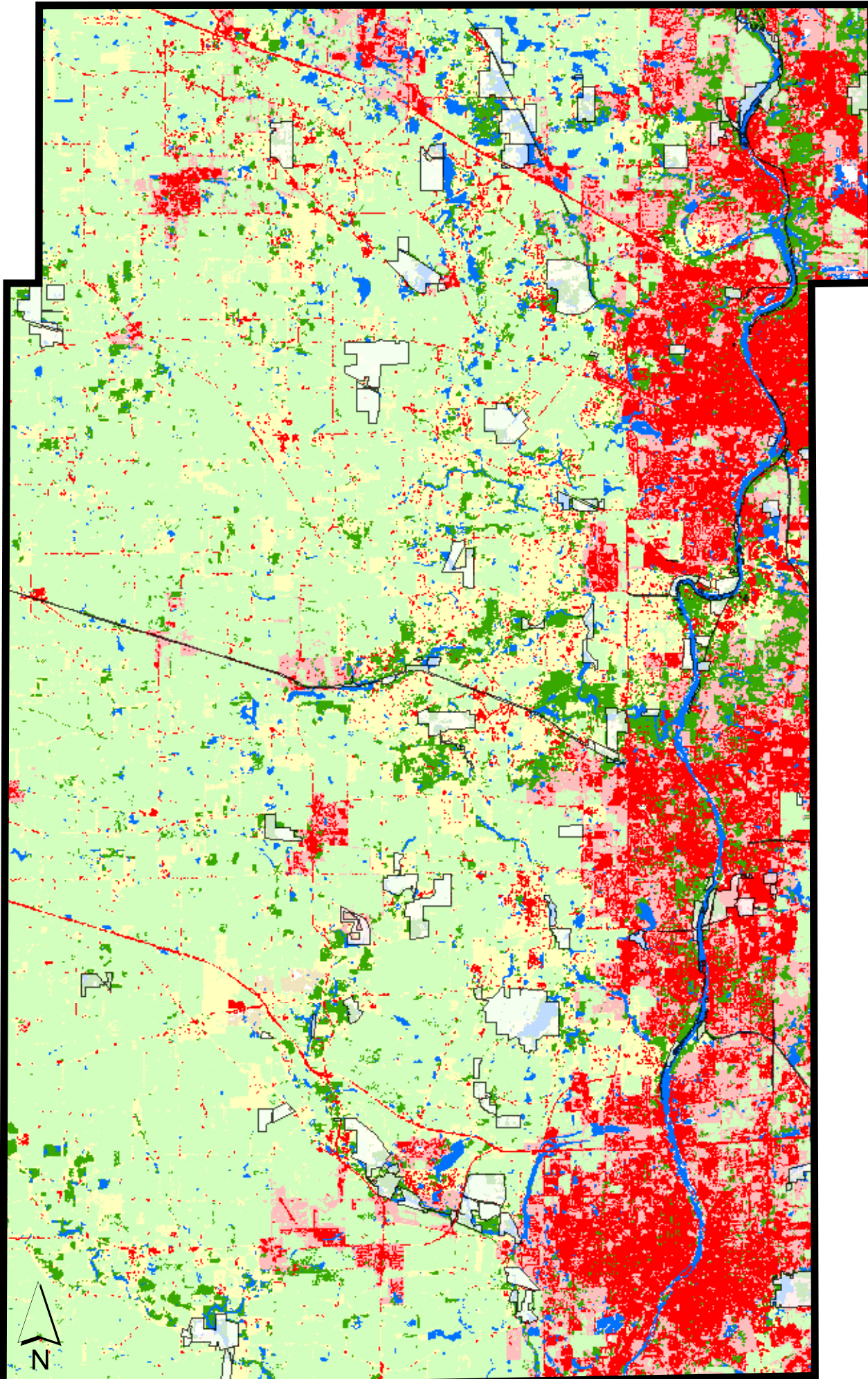
Legend

	Kane County		Forest
	Forest Preserve Land		Grassland
	Wetland		Agricultural
	Barren		Urban
			Urban Open Space

Name	sq ft total	acres	of total
Count		336184	100.00%
FPD Land		13144	3.91%
Wetlands		14896	4.43%
Barren		909	0.27%
Grassland		60107	17.88%
Forest		30252	9.00%
Agriculture		175792	52.29%
Urban		50912	15.14%
Urban Open		34047	10.13%

Data Sources:

Kane County Forest Preserve Land: Kane County FPD, February 2004
Landcover layers: Land Cover of Illinois 1999-2000 data set



0 3 6 12 Miles